



Queen Elizabeth II Medical Centre Updates

QEIMC Trust Sustainability Framework

The Trust is committed towards improving sustainable outcomes for the QEIMC Campus land and community. The Trust has partnered with Campus tenants and sustainability experts Cundall to develop a Sustainability Framework.

The Framework encompasses key aspects of the Campus and operations in which the Trust has the ability or influence to make a positive difference. Following extensive consultation with QEIMC tenants and key stakeholders, five focus areas for positive action were identified:

- **Climate action and clean energy;**
- **Sustainable transport;**
- **Land management;**
- **Culture and community; and**
- **Leadership.**

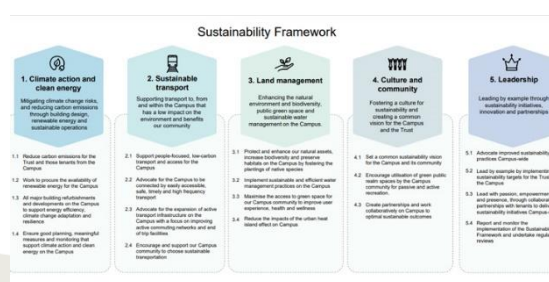
These focus areas for positive action are in line with the ambitious interim target set by the WA Government to reduce carbon emissions by 80% by 2030, from 2020 levels.

To implement the Framework, governance structures and education will be required. This includes updating and establishing policies and guidelines for tenant sustainability

activities, building standards, monitoring and reporting on sustainability outcomes for the Campus.

The Framework will be supported by an Implementation Plan which will guide the Trust, tenants, and Campus community to implement specific sustainable initiatives and create a meaningful contribution towards reducing greenhouse gases at QEIMC.

The Implementation Plan will provide a clear roadmap for the Trust's sustainability initiatives, which include measures supporting energy efficiency, renewable energy, sustainable transportation, water conservation and improvements to the green public spaces. [Click here or the image below to read more.](#)





Parking changes around Hampden Road

City of Perth has changed parking conditions for street parking to the areas east of Hampden Road to Winthrop Road. From 29 May, street parking has been reduced from two hours to one hour during weekdays between 8am and 5pm. Parking will now be for a maximum of four hours between 5pm and midnight on weekdays and all times on weekends.

The changes are based on community consultation by the City to better manage parking in the area. We understand these changes may cause difficulties for some staff and remind everyone to check the [QEIMC website for alternative travel options](#).

Gardens & Grounds



Mural adds fresh 'Zest' to R Block Southwest Courtyard

'Zest', a new mural by artist Sioux Tempestt, has elevated an otherwise ordinary corner of Campus with a pop of colour!

Not only is the mural a beautiful new point of interest, Tempestt has thoughtfully incorporated themes of local

flora, healing, science, research and education into the design.

Inspired by microscopic images of human cells, tissue and nerve endings, Tempestt also drew on the organic shapes showcased by the native plants of nearby Kings Park to create a piece of art that is both visually appealing and very relevant to some of the major goals and purposes of the QEIMC tenants and community.



Kilgour Park faces down its bullies!

A native but invasive species of plant, colloquially known as "bully bullrush", was removed by the tonne from Lake Kilgour in late May.

This plant needs to be carefully managed with specialised machinery, as infestations reduce water quality, interfere with water flow, restrict access of wildlife to water and facilitate the breeding of mosquitos and vermin. A bully indeed!

We're sure the local fauna are flapping for joy at their newly refreshed home!

Greenspace Upgrade Project by the PCH Foundation

Situated between the Perth Children's Hospital and the Multi-Deck Car Park, the Greenspace grassed area will soon be transformed into an immersive, natural environment for all users of the QEII Medical Centre to enjoy. For more information: pchf.org.au/greenspace-upgrade/

Smoking is not permitted anywhere on the QEIMC campus.

Please be reminded that the [No Smoking Policy](#) for the QEIMC includes all car parks and all external perimeters of buildings, including on Winthrop Avenue.

If you choose to smoke, please walk away from the QEIMC Campus and dispose of your butts responsibly.

